

LIFE OF A TREE PROJECT

By looking at a tree cookie (a cross-section of a tree), you can read the story of that tree's life. You can see the different events that happened to it and the environment it lived in. You can tell where it lived, if it went through a drought, was affected by disease, construction and fire. You can also see when it had excellent growing conditions with lots of sunshine, water and nutrients to feed on.

Task

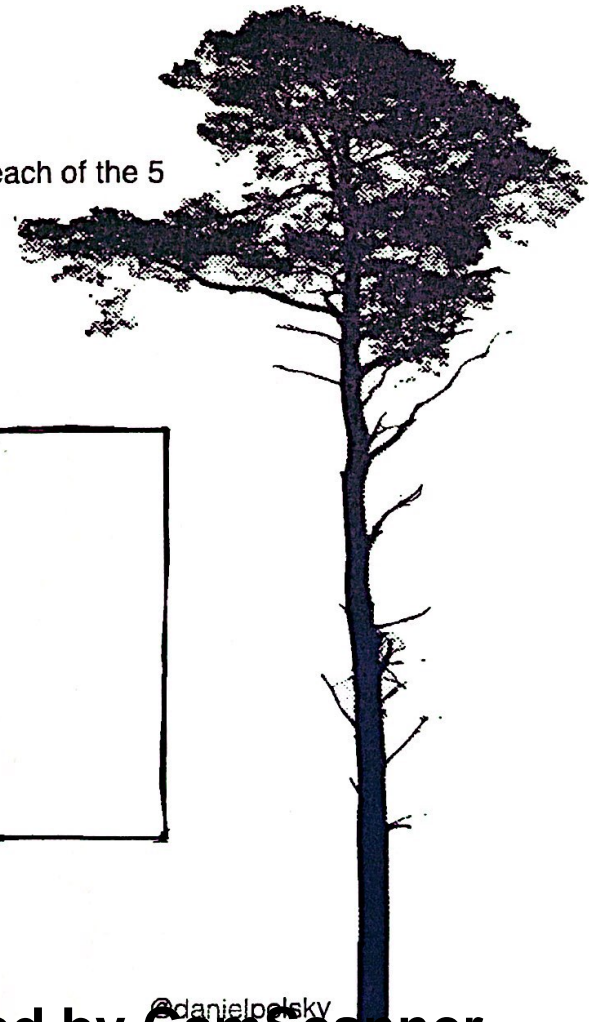
Your job is to choose a tree, create its tree cookie and tell its life. The five events must be realistic and believable for a tree that would be found in Alberta.

In your final product, you must have:

1. **A neatly drawn picture of the tree cookie** that shows the 5 realistic events that happened to the tree and the correct number of rings for the age.
2. The tree cookie must be **clearly labelled** with the 5 events.
3. **An introductory paragraph** that explains:
 - a. The name and type of tree
 - b. The age of the tree
 - c. Where in Alberta this tree would have lived
 - d. The 5 different events that happened to it
4. **5 event information paragraphs** with information on each of the 5 different events that explain in detail:
 - a. What is the event
 - b. How this event affects the tree
 - c. How this event can affect all trees and the whole forest ecosystem

Comments:

This project is due: _____

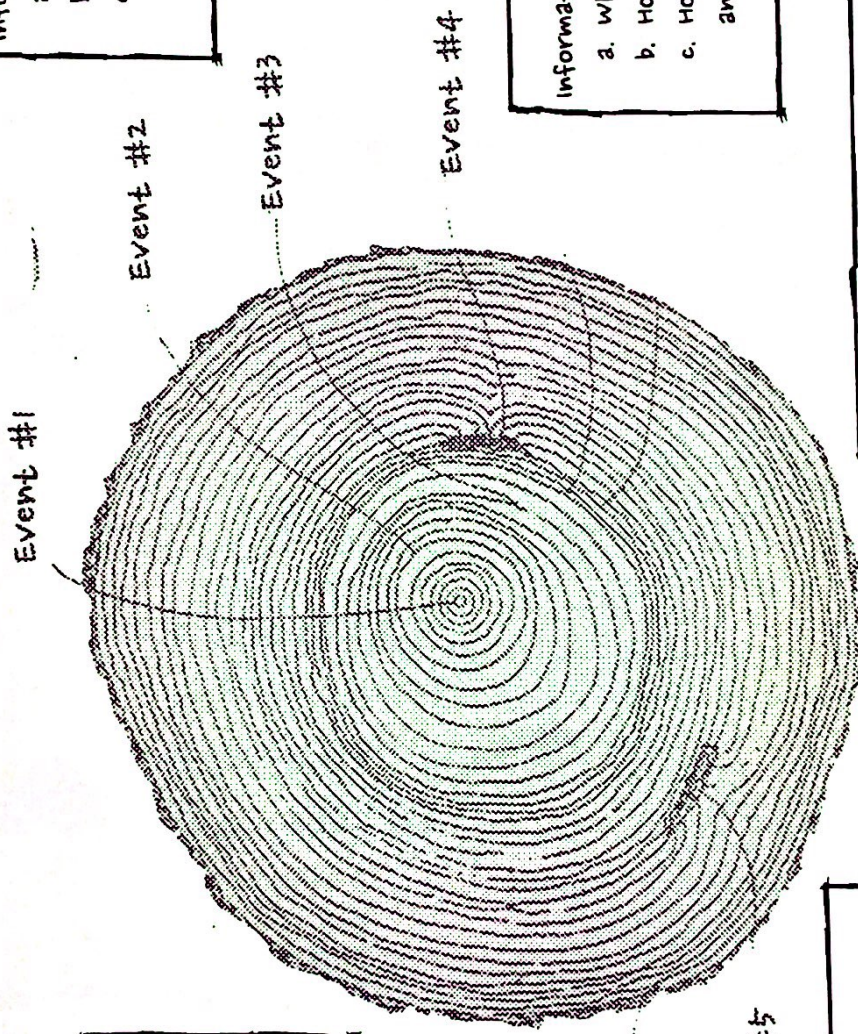


Life of a Tree

Paragraph that tells me generally about the whole life of the tree, the age of the tree, the type of the tree and its name, as well as the 5 different events that happened to it.

Information paragraph about Event #1

- What is the event. Describe it.
- How this event affects the tree
- How this event can affect all trees and the whole forest ecosystem



Information paragraph about Event #2

- What is the event. Describe it.
- How this event affects the tree
- How this event can affect all trees and the whole forest ecosystem

Information paragraph about Event #3

- What is the event. Describe it.
- How this event affects the tree
- How this event can affect all trees and the whole forest ecosystem

Information paragraph about Event #5

- What is the event. Describe it.
- How this event affects the tree
- How this event can affect all trees and the whole forest ecosystem

Information paragraph about Event #4

- What is the event. Describe it.
- How this event affects the tree
- How this event can affect all trees and the whole forest ecosystem

LIFE OF A TREE ASSIGNMENT

Age of Tree	___/1
Type of Tree	___/1
5 Events clearly shown in Picture	___/5
Introduction Paragraph	___/5
5 Informative Paragraphs	___/15
Detail/Conventions/Quality	___/5
TOTAL:	___/32

LIFE OF A TREE ASSIGNMENT

Age of Tree	___/1
Type of Tree	___/1
5 Events clearly shown in Picture	___/5
Introduction Paragraph	___/5
5 Informative Paragraphs	___/15
Detail/Conventions/Quality	___/5
TOTAL:	___/32

LIFE OF A TREE ASSIGNMENT

Age of Tree	___/1
Type of Tree	___/1
5 Events clearly shown in Picture	___/5
Introduction Paragraph	___/5
5 Informative Paragraphs	___/15
Detail/Conventions/Quality	___/5
TOTAL:	___/32

LIFE OF A TREE ASSIGNMENT

Age of Tree	___/1
Type of Tree	___/1
5 Events clearly shown in Picture	___/5
Introduction Paragraph	___/5
5 Informative Paragraphs	___/15
Detail/Conventions/Quality	___/5
TOTAL:	___/32

LIFE OF A TREE ASSIGNMENT

Age of Tree	___/1
Type of Tree	___/1
5 Events clearly shown in Picture	___/5
Introduction Paragraph	___/5
5 Informative Paragraphs	___/15
Detail/Conventions/Quality	___/5
TOTAL:	___/32

LIFE OF A TREE ASSIGNMENT

Age of Tree	___/1
Type of Tree	___/1
5 Events clearly shown in Picture	___/5
Introduction Paragraph	___/5
5 Informative Paragraphs	___/15
Detail/Conventions/Quality	___/5
TOTAL:	___/32

LIFE OF A TREE ASSIGNMENT

Age of Tree	___/1
Type of Tree	___/1
5 Events clearly shown in Picture	___/5
Introduction Paragraph	___/5
5 Informative Paragraphs	___/15
Detail/Conventions/Quality	___/5
TOTAL:	___/32

LIFE OF A TREE ASSIGNMENT

Age of Tree	___/1
Type of Tree	___/1
5 Events clearly shown in Picture	___/5
Introduction Paragraph	___/5
5 Informative Paragraphs	___/15
Detail/Conventions/Quality	___/5
TOTAL:	___/32